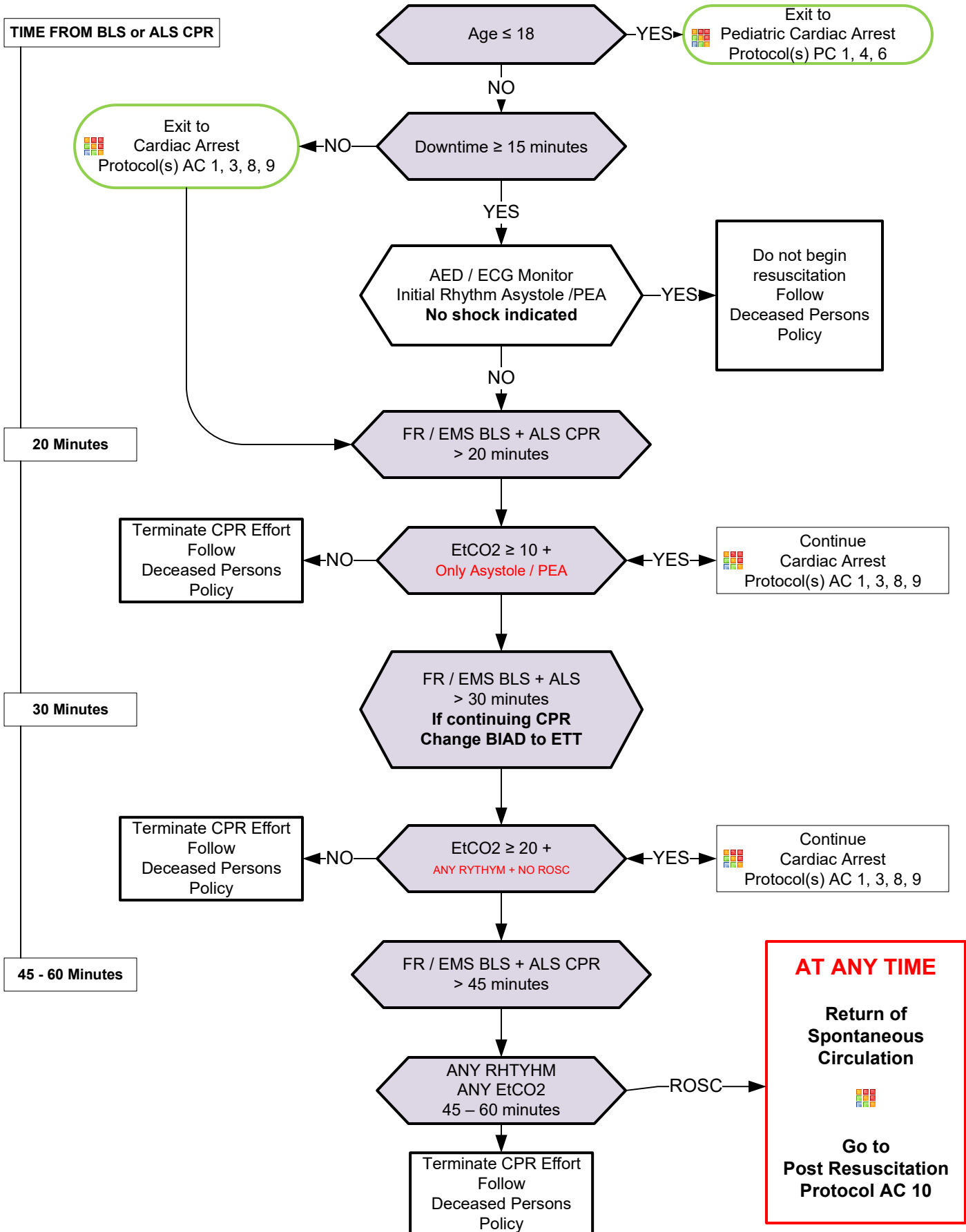




On Scene Resuscitation Termination of CPR





On Scene Resuscitation / Termination of CPR

ROSC ALWAYS RESETS THE CLOCK - ALL ROSC TRANSPORTED TO ER AFTER COOL DOWN

Work entire code on scene unless unsafe to do so

Better chance of High Quality CPR while stationary on scene

Likely-hood of meaningful neurological recovery after 45 minutes in arrest is very low
- Exceptions are hypothermic and pediatric arrest scenarios

End Tidal CO₂ is affected by Bicarb administration.

AT 45-60 minutes with no ROSC - May terminate with ANY RHYTHM - ANY EtCO₂

Pearls

- **General approach:**
 1. Determine if a terminal disease is involved?
 2. Is there an advanced directive such as a DNR / MOST form?
 3. Did the patient express to your historian any desires regarding resuscitation and if so what measures?
 4. Remember a living will is not a DNR.
- Obtain a history while resuscitation efforts are ongoing. Determine the most legitimate person on scene as your information source such as a spouse, child, or sibling or Durable Health Care Power of Attorney.
- Basic and Advanced Life Support may use for treatment decisions.